

Headquarters Laboratory

P.O. Box 670
Collinsville, MS 39325
Office: (601) 626-1100
Fax: (601) 626-1122



Florida Laboratory

201 Douglas Avenue, Suite A
Dunedin, FL 34698
Office: (727) 253-4991
Fax (727) 953-7849

Ron Smith & Associates, Inc.

Testing Division

Toll Free: 1-866-832-6772 | www.RonSmithandAssociates.com

Email: testing@ronsmithandassociates.com

Summary Report

Spring 2018 Latent Comparison Print Proficiency Test #18101

Issued: May 10, 2018

On January 29, 2018, Ron Smith and Associates, Inc. (RS&A) shipped the Spring 2018 Latent Print Comparison Proficiency Test #18101. Participants were required to submit their responses no later than April 2, 2018 in order for them to be included in this summary report.

A total of 106 tests were ordered and shipped, with 100 participants returning their responses. **This summary report is based on 1,000 individual responses (100 participants returning 10 responses each).** The test was provided in both digital and/or hard copy format and included ten latent prints and four sets of known fingerprints and palm prints.

The results presented in this report reflect whether or not the participants' submitted results are consistent or inconsistent with the assigned values garnered from pre-distribution testing and outlined in ***The Manufacturer's Report*** (Appendix 1). The primary purpose of a Summary Report is to provide an overall documentation of all the submitted responses. It is RS&A's intention to go a step further by providing more meaningful statistical results through analyzing the submitted responses in relation to the demographics obtained from each of the examiners participating in this proficiency test. All results and statistics for Test #18101 will be outlined through graphs and charts found in the remainder of this report.

Prior to distribution of this test, all of the expected responses were determined to be either "Identification" or "Exclusion"; however, we are aware that some agencies allow for a conclusion of "Inconclusive" in their casework. In designing this Proficiency Test, there was no intention to force a participant to render a conclusion which goes beyond their considered opinion. To satisfy this option, participants were allowed to enter "Inconclusive" as a response. Due to the fact that a participant's "Inconclusive" response does not meet the assigned values, it will appear as an inconsistent response in the summary report and be incorporated as such in the statistical analysis. It will be up to each agency to decide if the participant's "Inconclusive" response qualifies as being acceptable under their policies and procedures.

RS&A strives to maintain the confidentiality of all of its clients and participants. All results are obtained and published using randomly generated test codes. RS&A will not release the identity of any participant without the written consent of the participant and/or the agency involved.

For any additional information, please contact the Latent Print Proficiency Test Coordinator at testing@ronsmithandassociates.com or call toll free at 1-866-832-6772.

Appendix 1

Test Manufacturer's Information

Spring 2018 Latent Print Comparison Proficiency Test #18101

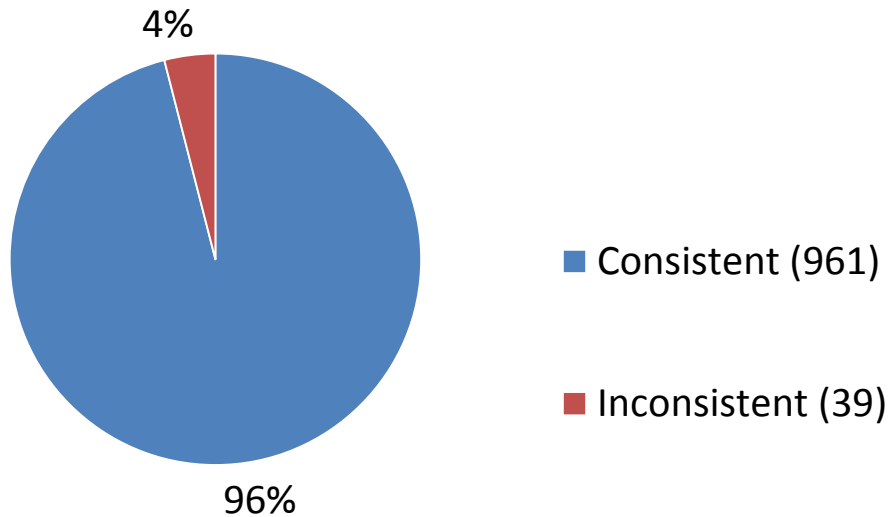
This test consisted of ten latent prints and four sets of known fingerprints and palm prints. The assigned values are as follows:

Latent Print Number	Conclusion	Subject Number	Specific Finger or Palm
L-1	Identification	K-3	Right Thumb
L-2	Identification	K-4	Left Thumb
L-3	Exclusion		
L-4	Exclusion		
L-5	Exclusion		
L-6	Exclusion		
L-7	Exclusion		
L-8	Exclusion		
L-9	Exclusion		
L-10	Identification	K-3	Right Thumb

The test was provided in hard copy photograph and/or digital image formats. The assigned values were determined through the ground truth information and verified through unanimous agreement during pre-distribution testing.

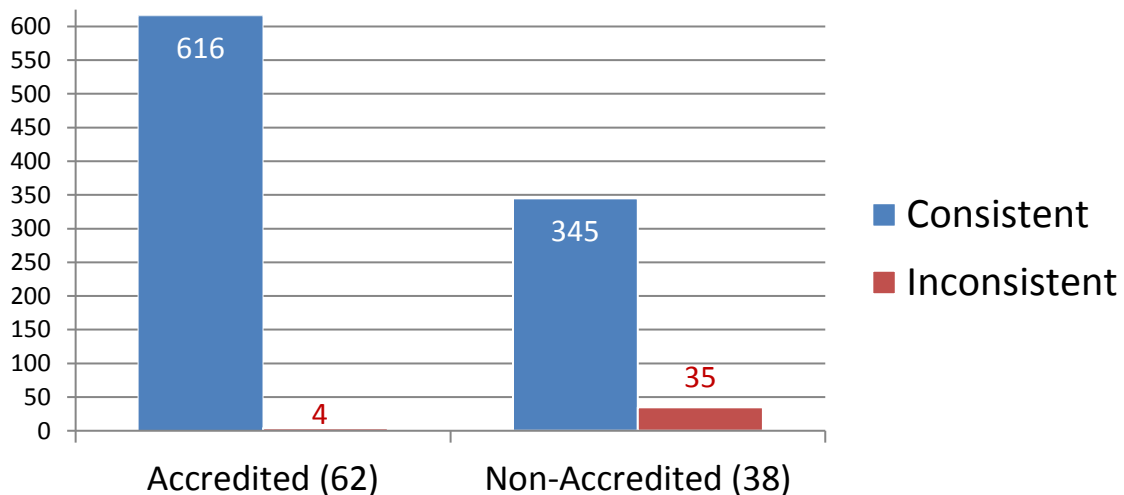
Appendix 2

Consistent vs Inconsistent Responses Compared to Assigned Values



Appendix 3

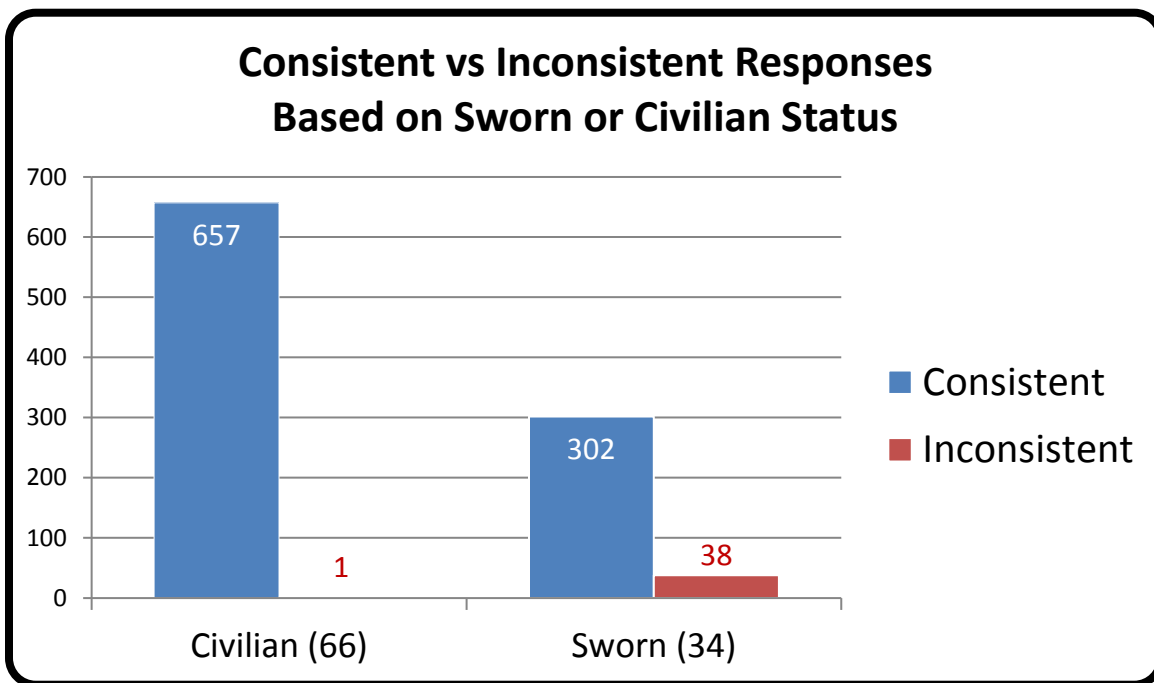
Consistent vs Inconsistent Responses Based on Accreditation



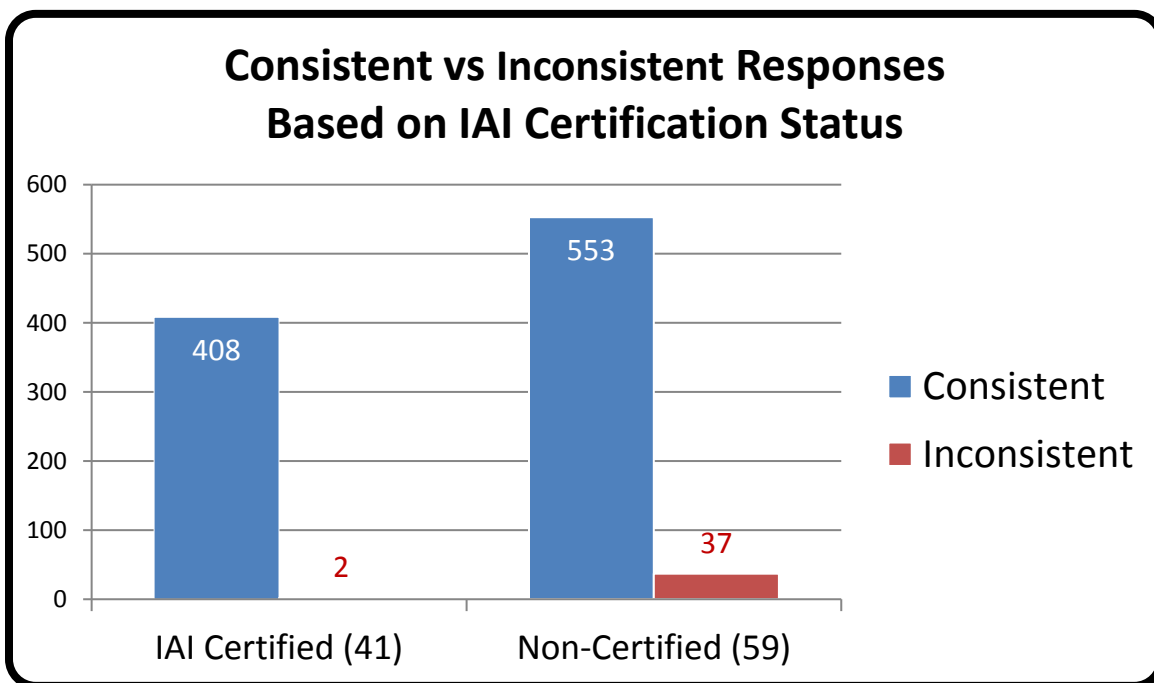
*Numerical values shown are based on **100 participant submissions** equaling **1,000 total responses**.

*For further information, please read ***Manufacturer's Additional Observations*** on the final page of this report.

Appendix 4



Appendix 5

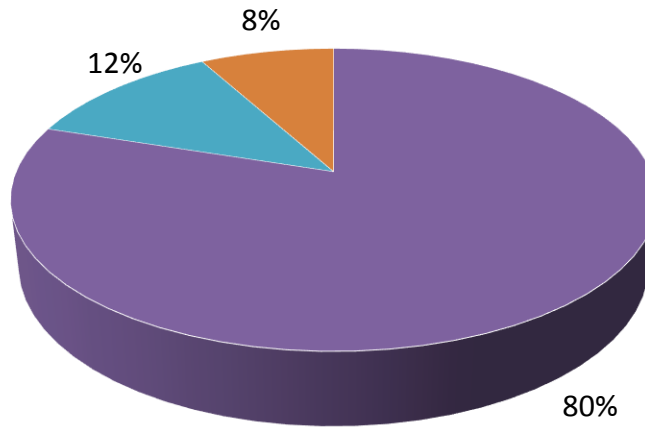


*Numerical values shown are based on **100 participant submissions** equaling **1,000 total responses**.

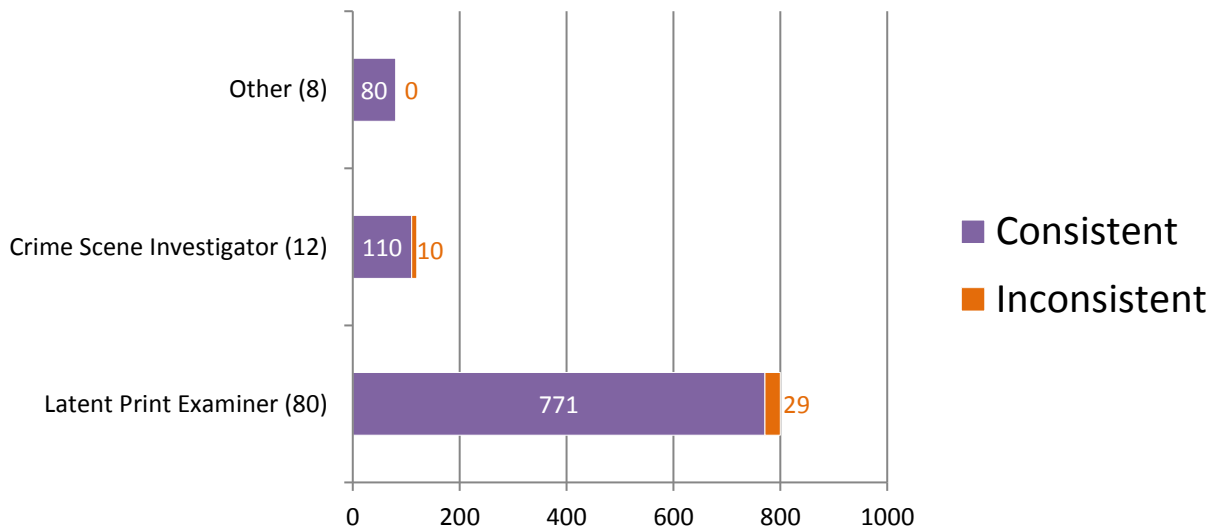
*For further information, please read ***Manufacturer's Additional Observations*** on the final page of this report.

Appendix 6

Percentage of Participants Based on Primary Job Position



Consistent vs Inconsistent Responses Based on Primary Job Position

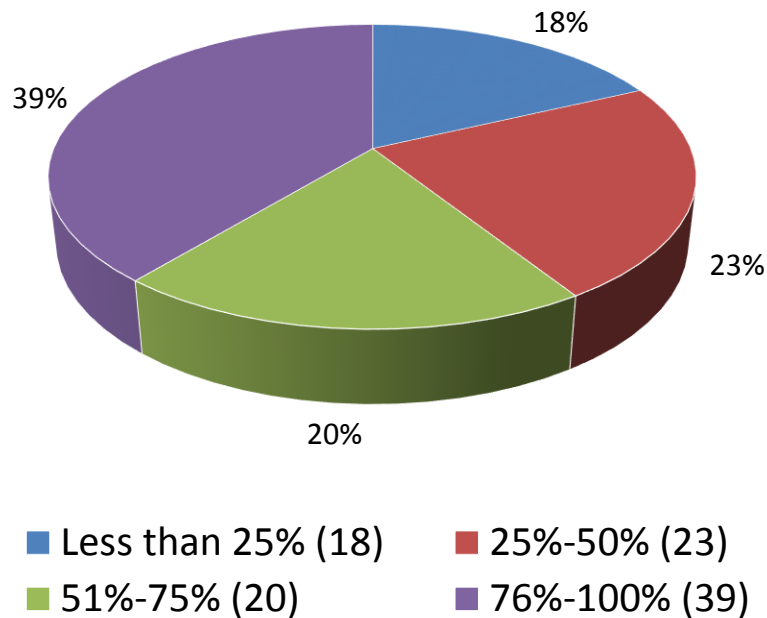


*Numerical values shown are based on **100 participant submissions** equaling **1,000 total responses**.

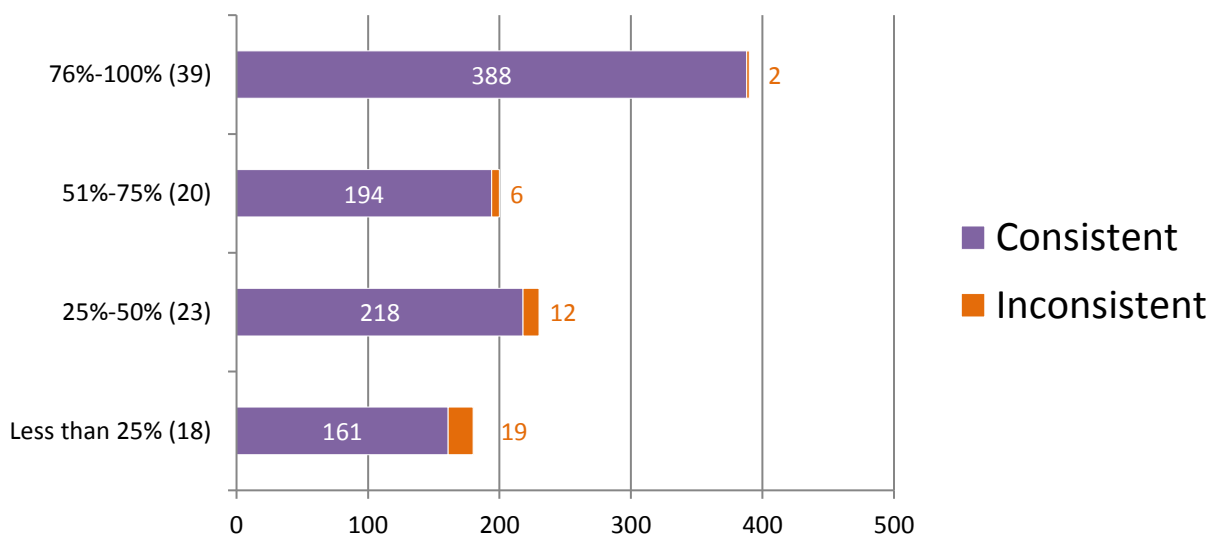
*For further information, please read **Manufacturer's Additional Observations** on the final page of this report.

Appendix 7

Percentage of Participants Based on Time Devoted to Latent Print Casework



Consistent vs Inconsistent Responses Based on Time Devoted to Latent Print Casework

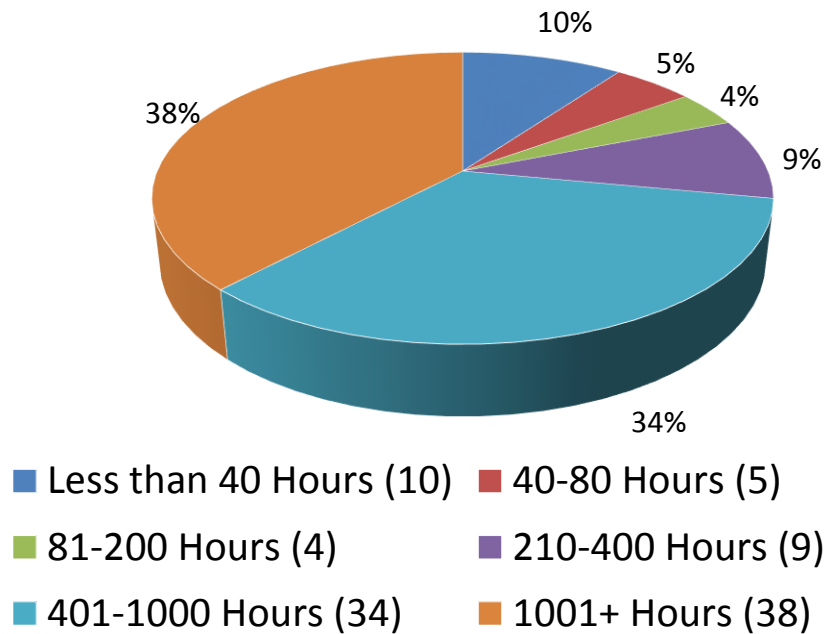


*Numerical values shown are based on **100 participant submissions** equaling **1,000 total responses**.

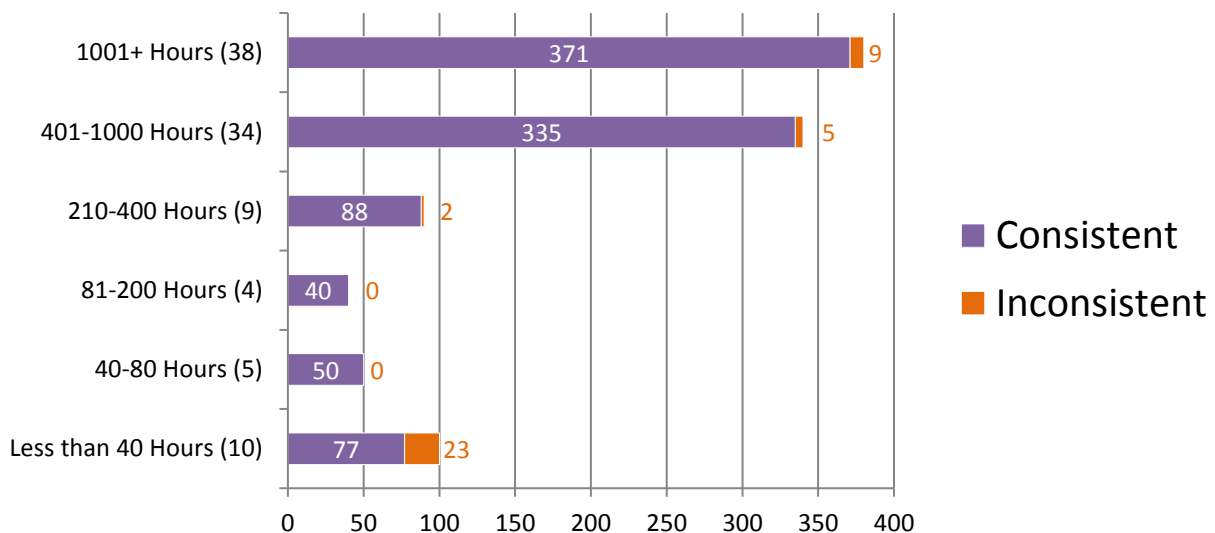
*For further information, please read **Manufacturer's Additional Observations** on the final page of this report.

Appendix 8

Percentage of Participants Based on Hours of Latent Print Training Completed



Consistent vs Inconsistent Responses Based on Hours of Latent Print Training Completed

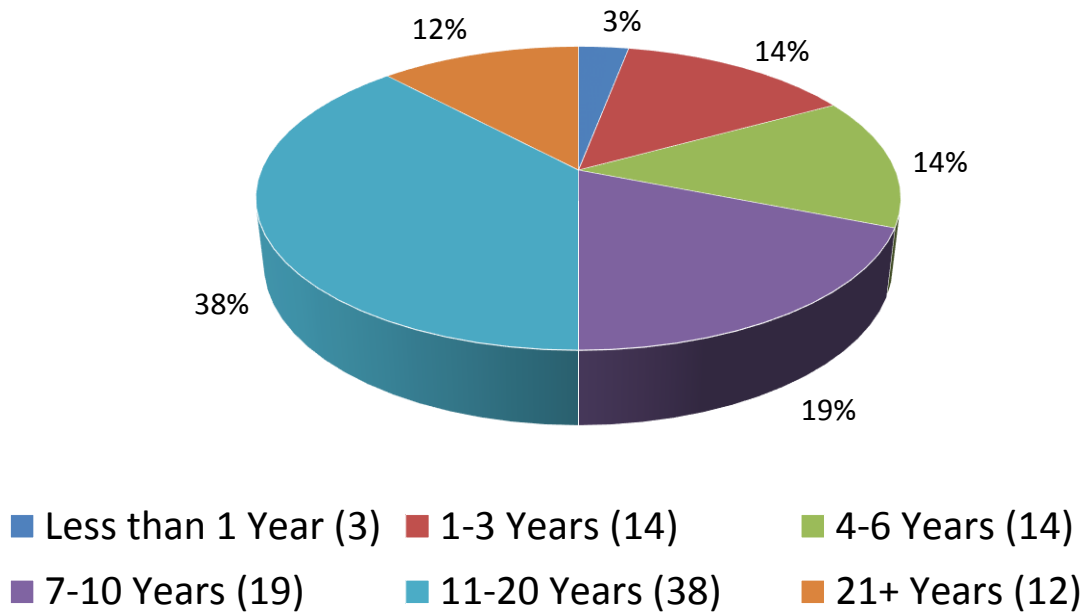


*Numerical values shown are based on **100 participant submissions** equaling **1,000 total responses**.

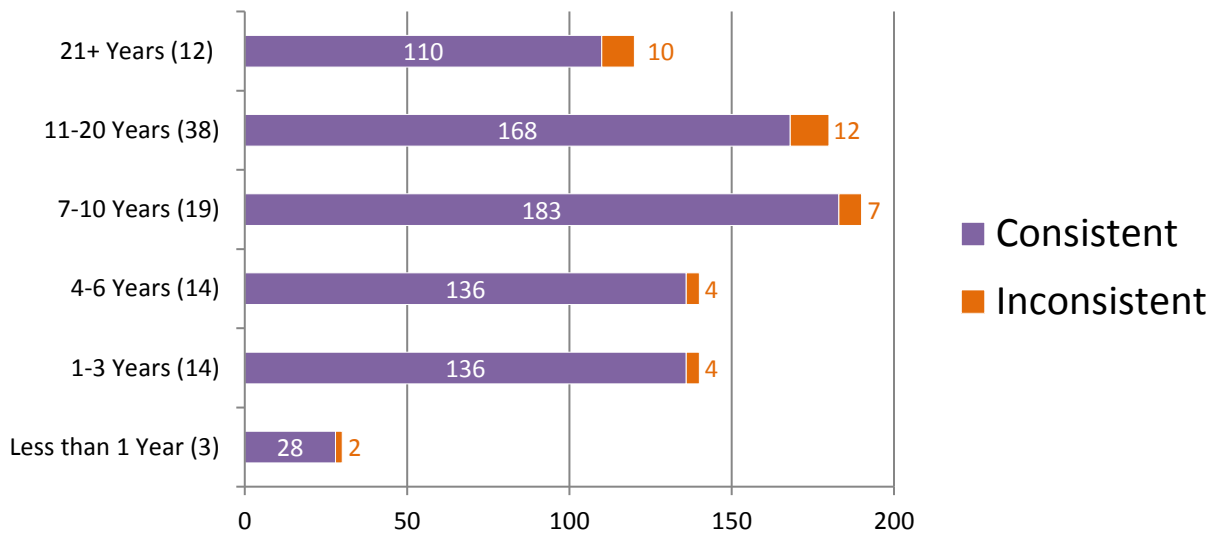
*For further information, please read **Manufacturer's Additional Observations** on the final page of this report.

Appendix 9

Percentage of Participants Based on Years of Experience in Latent Prints



Consistent vs Inconsistent Responses Based on Years of Experience in Latent Prints

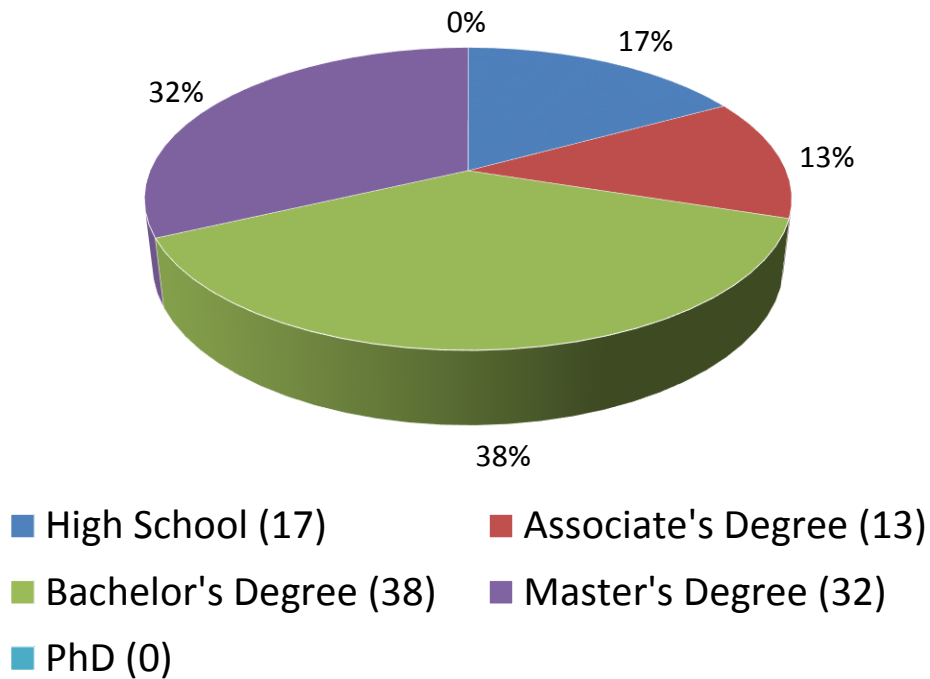


*Numerical values shown are based on **100 participant submissions** equaling **1,000 total responses**.

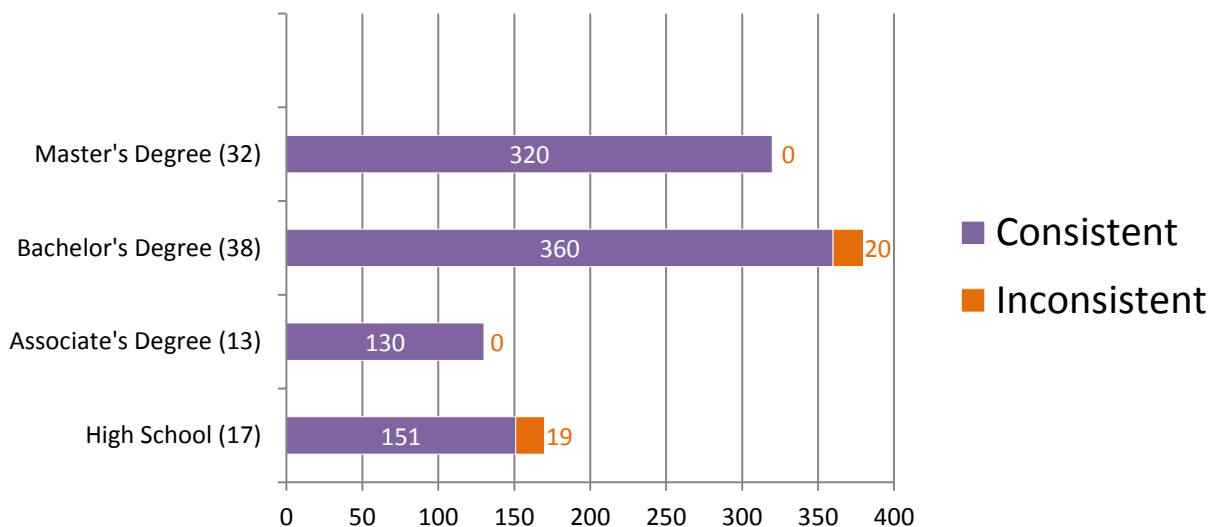
*For further information, please read **Manufacturer's Additional Observations** on the final page of this report.

Appendix 10

Percentage of Participants Based on Highest Level of Education Completed



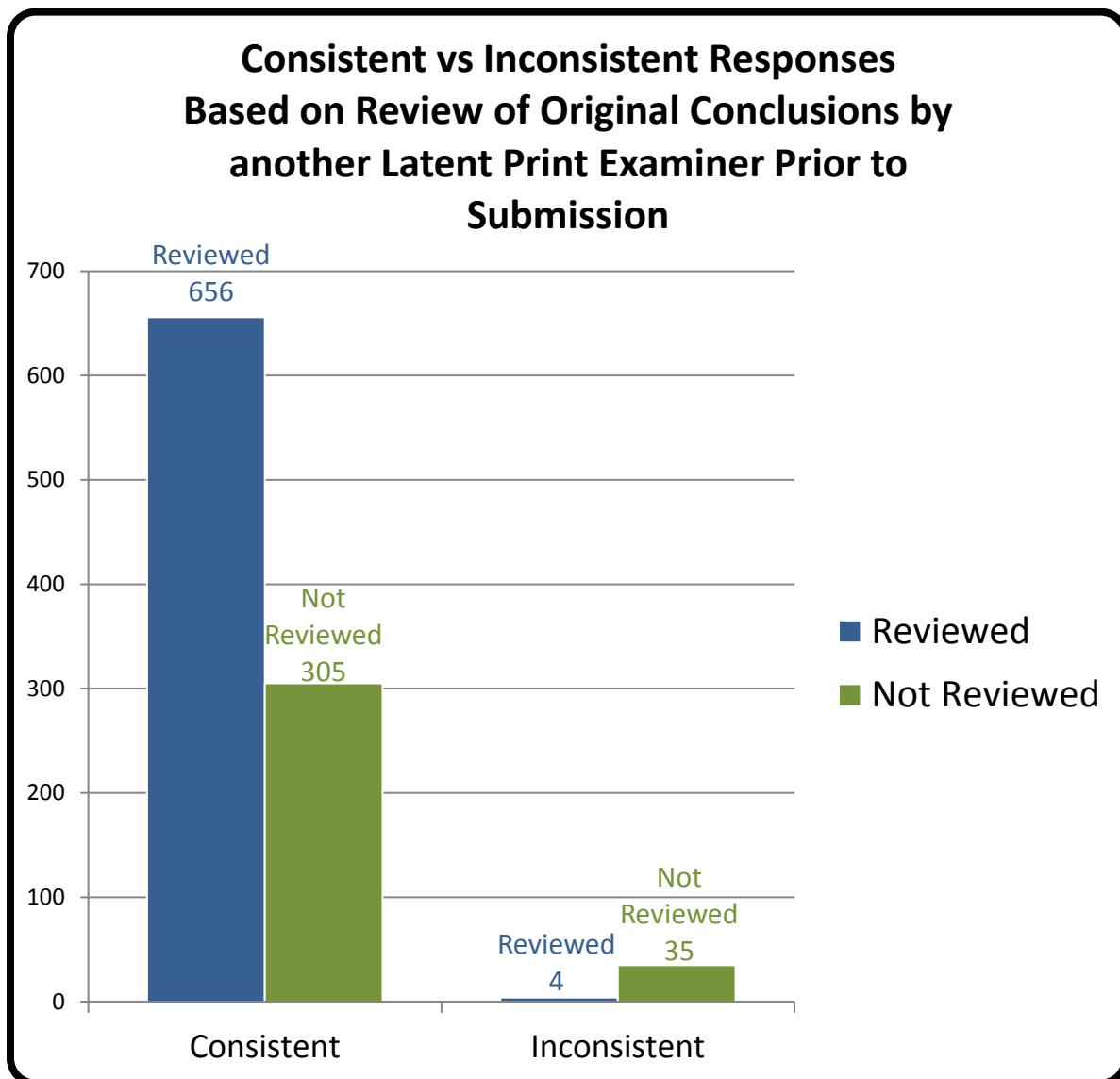
Consistent vs Inconsistent Responses Based on Highest Level of Education Completed



*Numerical values shown are based on **100 participant submissions** equaling **1,000 total responses**.

*For further information, please read **Manufacturer's Additional Observations** on the final page of this report.

Appendix 11



*Numerical values shown are based on **100 participant submissions** equaling **1,000 total responses**.

*For further information, please read ***Manufacturer's Additional Observations*** on the final page of this report.

Appendix 12

Participant Responses Listed by Test Code

	Latent Print #	L-1	L-2	L-3	L-4	L-5	L-6	L-7	L-8	L-9	L-10
	Assigned Values	ID K-3 RT	ID K-4 LT	EXC	EXC	EXC	EXC	EXC	EXC	EXC	ID K-3 RT
	8159P18101	ID K-3 RT	ID K-4 LT	EXC	EXC	EXC	EXC	EXC	EXC	EXC	ID K-3 RT
	5369X18101	ID K-3 RT	ID K-4 LT	EXC	EXC	EXC	EXC	EXC	EXC	EXC	ID K-3 RT
	6884Y18101	ID K-3 RT	ID K-4 LT	EXC	EXC	EXC	EXC	EXC	EXC	EXC	ID K-3 RT
	8141F18101	ID K-3 RT	ID K-4 LT	EXC	EXC	EXC	EXC	EXC	EXC	EXC	ID K-3 RT
	673T18101	ID K-3 RT	ID K-4 LT	EXC	EXC	EXC	EXC	EXC	EXC	EXC	ID K-3 RT
	959Q18101	ID K-3 RT	ID K-4 LT	EXC	EXC	EXC	EXC	EXC	EXC	EXC	ID K-3 RT
	4448G18101	ID K-3 RT	ID K-4 LT	EXC	EXC	EXC	EXC	EXC	EXC	EXC	ID K-3 RT
	3777B18101	ID K-3 RT	ID K-4 LT	EXC	EXC	EXC	EXC	EXC	INC	EXC	ID K-3 RT
	734G18101	ID K-3 RT	ID K-4 LT	EXC	EXC	EXC	EXC	EXC	EXC	EXC	ID K-3 RT
	731K18101	ID K-3 RT	ID K-4 LT	EXC	EXC	ID K-3 LT	ID K-2 LT	ID K-2 RT	ID K-2 LI	ID K-4 LT	ID K-3 RT
	1435L18101	ID K-3 RT	ID K-4 LT	EXC	EXC	ID K-3 LR	EXC	EXC	EXC	EXC	EXC
	7960P18101	ID K-3 RT	ID K-4 LT	EXC	EXC	ID K-3 LT	ID K-2 LT	ID K-2 RT	ID K-2 LI	ID K-4 LT	ID K-3 RT
	3199Z18101	ID K-3 RT	ID K-4 LT	EXC	EXC	ID K-3 LT	ID K-2 LT	ID K-2 RT	ID K-2 LI	ID K-4 LT	ID K-3 RT

Latent Print #	L-1	L-2	L-3	L-4	L-5	L-6	L-7	L-8	L-9	L-10
Assigned Values	ID K-3 RT	ID K-4 LT	EXC	EXC	EXC	EXC	EXC	EXC	EXC	ID K-3 RT
6185C18101	ID K-3 RT	ID K-4 LT	EXC	EXC	ID K-3 LT	ID K-2 LT	ID K-2 LT	ID K-2 LI	ID K-4 LT	ID K-3 RT
2008G18101	ID K-3 RT	ID K-4 LT	EXC	EXC	ID K-3 LR	EXC	EXC	EXC	EXC	EXC
1921O18101	ID K-3 RT	ID K-4 LT	EXC	EXC	ID K-3 LR	EXC	EXC	EXC	EXC	EXC
3451I18101	ID K-3 RT	ID K-4 LT	EXC	EXC	ID K-3 LR	EXC	EXC	EXC	EXC	EXC
7438P18101	ID K-3 RT	ID K-4 LT	EXC	EXC	EXC	EXC	EXC	EXC	EXC	ID K-3 RT
3010X18101	ID K-3 RT	ID K-4 LT	EXC	EXC	EXC	EXC	EXC	EXC	EXC	ID K-3 RT
3523O18101	ID K-3 RT	ID K-4 LT	EXC	EXC	EXC	EXC	EXC	EXC	EXC	INC
3991Y18101	ID K-3 RT	ID K-4 LT	EXC	EXC	EXC	EXC	EXC	EXC	EXC	ID K-3 RT
455Q18101	ID K-3 RT	ID K-4 LT	EXC	EXC	EXC	EXC	EXC	EXC	EXC	ID K-3 RT
609T18101	ID K-3 RT	ID K-4 LT	EXC	EXC	ID K-3 LR	EXC	EXC	EXC	EXC	EXC
8870N18101	ID K-3 RT	ID K-4 LT	EXC	EXC	EXC	EXC	EXC	EXC	EXC	ID K-3 RT
8878C18101	ID K-3 RT	ID K-4 LT	EXC	EXC	ID K-3 LR	EXC	EXC	EXC	EXC	EXC
4979K18101	ID K-3 RT	ID K-4 LT	EXC	EXC	EXC	EXC	EXC	EXC	EXC	ID K-3 RT
9853E18101	ID K-3 RT	ID K-4 LT	EXC	EXC	EXC	EXC	EXC	EXC	EXC	ID K-3 RT
6614S18101	ID K-3 RT	ID K-4 LT	EXC	EXC	EXC	EXC	EXC	EXC	EXC	ID K-3 RT

Latent Print #	L-1	L-2	L-3	L-4	L-5	L-6	L-7	L-8	L-9	L-10
Assigned Values	ID K-3 RT	ID K-4 LT	EXC	EXC	EXC	EXC	EXC	EXC	EXC	ID K-3 RT
8577U18101	ID K-3 RT	ID K-4 LT	EXC	EXC	EXC	EXC	EXC	EXC	EXC	ID K-3 RT
2974P18101	ID K-3 RT	ID K-4 LT	EXC	EXC	ID K-3 LR	EXC	EXC	EXC	EXC	EXC
5534I18101	ID K-3 RT	ID K-4 LT	EXC	EXC	EXC	EXC	EXC	EXC	EXC	ID K-3 RT
2851S18101	ID K-3 RT	ID K-4 LT	EXC	EXC	EXC	EXC	EXC	EXC	EXC	ID K-3 RT
3961C18101	ID K-3 RT	ID K-4 LT	EXC	EXC	EXC	EXC	EXC	EXC	EXC	ID K-3 RT
331K18101	ID K-3 RT	ID K-4 LT	EXC	EXC	EXC	EXC	EXC	EXC	EXC	ID K-3 RT
7944M18101	ID K-3 RT	ID K-4 LT	EXC	EXC	EXC	EXC	EXC	EXC	EXC	ID K-3 RT
7955B18101	ID K-3 RT	ID K-4 LT	EXC	EXC	EXC	EXC	EXC	EXC	EXC	ID K-3 RT
1504Q18101	ID K-3 RT	ID K-4 LT	EXC	EXC	EXC	EXC	EXC	EXC	EXC	ID K-3 RT
1238M18101	ID K-3 RT	ID K-4 LT	EXC	EXC	EXC	EXC	EXC	EXC	EXC	ID K-3 RT
2930W18101	ID K-3 RT	ID K-4 LT	EXC	EXC	EXC	EXC	EXC	EXC	EXC	ID K-3 RT
7534M18101	ID K-3 RT	ID K-4 LT	EXC	EXC	EXC	EXC	EXC	EXC	EXC	ID K-3 RT
5223D18101	ID K-3 RT	ID K-4 LT	EXC	EXC	EXC	EXC	EXC	EXC	EXC	ID K-3 RT
6938K18101	ID K-3 RT	ID K-4 LT	EXC	EXC	EXC	EXC	EXC	EXC	EXC	ID K-3 RT
4818I18101	ID K-3 RT	ID K-4 LT	EXC	EXC	EXC	EXC	EXC	EXC	EXC	ID K-3 RT

	Latent Print #	L-1	L-2	L-3	L-4	L-5	L-6	L-7	L-8	L-9	L-10
	Assigned Values	ID K-3 RT	ID K-4 LT	EXC	EXC	EXC	EXC	EXC	EXC	EXC	ID K-3 RT
	1956P18101	ID K-3 RT	ID K-4 LT	EXC	EXC	EXC	EXC	EXC	EXC	EXC	ID K-3 RT
	6556K18101	ID K-3 RT	ID K-4 LT	EXC	EXC	EXC	EXC	EXC	EXC	EXC	ID K-3 RT
	1877Y18101	ID K-3 RT	ID K-4 LT	EXC	EXC	EXC	EXC	EXC	EXC	EXC	ID K-3 RT
	3705G18101	ID K-3 RT	ID K-4 LT	EXC	EXC	EXC	EXC	EXC	EXC	EXC	ID K-3 RT
	6853C18101	ID K-3 RT	ID K-4 LT	EXC	EXC	EXC	EXC	EXC	EXC	EXC	ID K-3 RT
	6858E18101	ID K-3 RT	ID K-4 LT	EXC	EXC	EXC	EXC	EXC	EXC	EXC	ID K-3 RT
	5431P18101	ID K-3 RT	ID K-4 LT	EXC	EXC	EXC	EXC	EXC	EXC	EXC	ID K-3 RT
	9988Y18101	ID K-3 RT	ID K-4 LT	EXC	EXC	EXC	EXC	EXC	EXC	EXC	ID K-3 RT
	5667W18101	ID K-3 RT	ID K-4 LT	EXC	EXC	EXC	EXC	EXC	EXC	EXC	ID K-3 RT
	4592O18101	ID K-3 RT	ID K-4 LT	EXC	EXC	EXC	EXC	EXC	EXC	EXC	ID K-3 RT
	8860X18101	ID K-3 RT	ID K-4 LT	EXC	EXC	EXC	EXC	EXC	EXC	EXC	ID K-3 RT
	6302E18101	ID K-3 RT	ID K-4 LT	EXC	EXC	EXC	EXC	EXC	EXC	EXC	ID K-3 RT
	3320C18101	ID K-3 RT	ID K-4 LT	EXC	EXC	EXC	EXC	EXC	EXC	EXC	ID K-3 RT
	7679U18101	ID K-3 RT	ID K-4 LT	EXC	EXC	EXC	EXC	EXC	EXC	EXC	ID K-3 RT
	7068I18101	ID K-3 RT	ID K-4 LT	EXC	EXC	EXC	EXC	EXC	EXC	EXC	ID K-3 RT

	Latent Print #	L-1	L-2	L-3	L-4	L-5	L-6	L-7	L-8	L-9	L-10
	Assigned Values	ID K-3 RT	ID K-4 LT	EXC	EXC	EXC	EXC	EXC	EXC	EXC	ID K-3 RT
	9442I18101	ID K-3 RT	ID K-4 LT	EXC	EXC	EXC	EXC	EXC	EXC	EXC	ID K-3 RT
	170P18101	ID K-3 RT	ID K-4 LT	EXC	EXC	EXC	EXC	EXC	EXC	EXC	ID K-3 RT
	5417C18101	ID K-3 RT	ID K-4 LT	EXC	EXC	EXC	EXC	EXC	EXC	EXC	ID K-3 RT
	2054Y18101	ID K-3 RT	ID K-4 LT	EXC	EXC	EXC	EXC	EXC	EXC	EXC	ID K-3 RT
	9141Q18101	ID K-3 RT	ID K-4 LT	EXC	EXC	EXC	EXC	EXC	EXC	EXC	ID K-3 RT
	9725B18101	ID K-3 RT	ID K-4 LT	EXC	EXC	EXC	EXC	EXC	EXC	EXC	ID K-3 RT
	8212K18101	ID K-3 RT	ID K-4 LT	EXC	EXC	EXC	EXC	EXC	EXC	EXC	ID K-3 RT
	7329N18101	ID K-3 RT	ID K-4 LT	EXC	EXC	EXC	EXC	EXC	EXC	EXC	ID K-3 RT
	550V18101	ID K-3 RT	ID K-4 LT	EXC	EXC	EXC	EXC	EXC	EXC	EXC	ID K-3 RT
	7810B18101	ID K-3 RT	ID K-4 LT	EXC	EXC	EXC	EXC	EXC	EXC	EXC	ID K-3 RT
	4525R18101	ID K-3 RT	ID K-4 LT	EXC	EXC	EXC	EXC	EXC	EXC	EXC	ID K-3 RT
	5472P18101	ID K-3 RT	ID K-4 LT	EXC	EXC	EXC	EXC	EXC	EXC	EXC	ID K-3 RT
	690P18101	ID K-3 RT	ID K-4 LT	EXC	EXC	EXC	EXC	EXC	EXC	EXC	ID K-3 RT
	2557F18101	ID K-3 RT	ID K-4 LT	EXC	EXC	EXC	EXC	EXC	EXC	EXC	ID K-3 RT
	2231A18101	ID K-3 RT	ID K-4 LT	EXC	EXC	EXC	EXC	EXC	EXC	EXC	ID K-3 RT

	Latent Print #	L-1	L-2	L-3	L-4	L-5	L-6	L-7	L-8	L-9	L-10
	Assigned Values	ID K-3 RT	ID K-4 LT	EXC	EXC	EXC	EXC	EXC	EXC	EXC	ID K-3 RT
	1561B18101	ID K-3 RT	ID K-4 LT	EXC	EXC	EXC	EXC	EXC	EXC	EXC	ID K-3 RT
	1561X18101	ID K-3 RT	ID K-4 LT	EXC	EXC	EXC	EXC	EXC	EXC	EXC	ID K-3 RT
	4741Q18101	ID K-3 RT	ID K-4 LT	EXC	EXC	EXC	EXC	EXC	EXC	EXC	ID K-3 RT
	1603X18101	ID K-3 RT	ID K-4 LT	EXC	EXC	EXC	EXC	EXC	EXC	EXC	ID K-3 RT
	7213L18101	ID K-3 RT	ID K-4 LT	EXC	EXC	EXC	EXC	EXC	EXC	EXC	ID K-3 RT
	5742I18101	ID K-3 RT	ID K-4 LT	EXC	EXC	EXC	EXC	EXC	EXC	EXC	ID K-3 RT
	7708H18101	ID K-3 RT	ID K-4 LT	EXC	EXC	EXC	EXC	EXC	EXC	EXC	ID K-3 RT
	4030Q18101	ID K-3 RT	ID K-4 LT	EXC	EXC	EXC	EXC	EXC	EXC	EXC	ID K-3 RT
	1317H18101	ID K-3 RT	ID K-4 LT	EXC	EXC	EXC	EXC	EXC	EXC	EXC	ID K-3 RT
	2977C18101	ID K-3 RT	ID K-4 LT	EXC	EXC	EXC	EXC	EXC	EXC	EXC	ID K-3 RT
	597E18101	ID K-3 RT	ID K-4 LT	EXC	EXC	EXC	EXC	EXC	EXC	EXC	ID K-3 RT
	7903C18101	ID K-3 RT	ID K-4 LT	EXC	EXC	EXC	EXC	EXC	EXC	EXC	ID K-3 RT
	4937D18101	ID K-3 RT	ID K-4 LT	EXC	EXC	EXC	EXC	EXC	EXC	EXC	ID K-3 RT
	979C18101	ID K-3 RT	ID K-4 LT	EXC	EXC	EXC	EXC	EXC	EXC	EXC	ID K-3 RT
	3075T18101	ID K-3 RT	ID K-4 LT	EXC	EXC	EXC	EXC	EXC	EXC	EXC	ID K-3 RT

Latent Print #	L-1	L-2	L-3	L-4	L-5	L-6	L-7	L-8	L-9	L-10
Assigned Values	ID K-3 RT	ID K-4 LT	EXC	EXC	EXC	EXC	EXC	EXC	EXC	ID K-3 RT
1502H18101	ID K-3 RT	ID K-4 LT	EXC	EXC	EXC	EXC	EXC	EXC	EXC	ID K-3 RT
285W18101	ID K-3 RT	ID K-4 LT	EXC	EXC	EXC	EXC	EXC	EXC	EXC	ID K-3 RT
8862G18101	ID K-3 RT	ID K-4 LT	EXC	EXC	EXC	EXC	EXC	EXC	EXC	ID K-3 RT
1663P18101	ID K-3 RT	ID K-4 LT	EXC	EXC	EXC	EXC	EXC	EXC	EXC	ID K-3 RT
4903N18101	ID K-3 RT	ID K-4 LT	EXC	EXC	EXC	EXC	EXC	EXC	EXC	ID K-3 RT
2197I18101	ID K-3 RT	ID K-4 LT	EXC	EXC	EXC	EXC	EXC	EXC	EXC	ID K-3 RT
3419R18101	ID K-3 RT	ID K-4 LT	EXC	EXC	EXC	EXC	EXC	EXC	EXC	ID K-3 RT
8976X18101	ID K-3 RT	ID K-4 LT	INC	EXC	INC	INC	EXC	EXC	EXC	ID K-3 RT
1774R18101	ID K-3 RT	ID K-4 LT	EXC	EXC	EXC	EXC	EXC	EXC	EXC	ID K-3 RT
1829A18101	ID K-3 RT	ID K-4 LT	EXC	EXC	EXC	EXC	EXC	EXC	EXC	ID K-3 RT
7548Y18101	ID K-3 RT	ID K-4 LT	EXC	EXC	EXC	EXC	EXC	EXC	EXC	ID K-3 RT
8208E18101	ID K-3 RT	ID K-4 LT	EXC	EXC	EXC	EXC	EXC	EXC	EXC	ID K-3 RT

Totals

Latent Print #	L-1	L-2	L-3	L-4	L-5	L-6	L-7	L-8	L-9	L-10
Assigned Values	ID K-3 RT	ID K-4 LT	EXC	EXC	EXC	EXC	EXC	EXC	EXC	ID K-3 RT
Consistent Responses	100	100	99	100	88	95	96	95	96	92
Inconsistent Responses	0	0	1	0	12	5	4	5	4	8
Percentage of Consistent Responses	100%	100%	99%	100%	88%	95%	96%	95%	96%	92%

Participant's Additional Comments

Test ID	Comments
959Q18101	The latent quality and tenprint quality is very, very good. Thank you. I appreciate that. The test is fair. Kind of freaked me out with a lot of exclusions but that is real life.
734G18101	those exclusions were just mean! :)
3199Z18101	Brilliant test of latent Print Comparison skills, you have to look beyond what you see, take into consideration pressure, slippage and thickness of ridges. Your ridge counting and ridge tracing plays a vital role. As a manager it was great to lead by example. Thanking you.
2851S18101	That was an exciting number of exclusions!
3961C18101	Latent L-9 is an exclusion to the fingerprints present on K-1 through K-4, however, I would consider it to be an impression and would require known palm prints of K-1 through K-4 to exclude to the palm and fingerprints of the named subjects.
1956P18101	A broad range of friction ridge detail in the test marks from low, medium & high quality. I would like to see palm marks included as part of a future proficiency test.

Manufacturer's Additional Observations

Based upon a review of the one thousand (1,000) total submitted responses, the following observations were noted:

1. A total of one hundred (100) participants representing forty five (45) agencies/entities submitted responses to test 18101. Of those forty-five (45) agencies, a total of only two (2) agencies submitted responses inconsistent with our assigned values.
2. Four (4) participants submitted tests with five (5) out of ten (10) total responses that did not coincide with the assigned values. Those participants held all of the following in common: Their laboratories were not ISO accredited, they were all sworn officers, they were not IAI certified latent print examiners, and their work was not reviewed by another examiner before they submitted.
3. Of the thirty-nine (39) inconsistent responses submitted on this test, five (5) of them were answers of "inconclusive." All of the participants who returned inconclusive responses held bachelor's degrees and had 11-20 years of experience in the field, but were not IAI certified latent print examiners.
4. The majority of inconsistent responses were submitted by participants reporting that they have received less than forty (40) hours of formal latent print examination training. Twenty three (23) of the thirty-nine (39) total inconsistent responses were accredited to this group.
5. As the amount of time that a participant reported they devoted to latent print casework increased, the number of inconsistent responses decreased. Participants reporting that they spend less than 25% of their time devoted to latent print casework accounted for nineteen (19) of the thirty-nine (39) inconsistent responses. Participants who reported that they spend 25% to 50% of their time devoted to latent print casework accounted for twelve (12) of the thirty-nine (39) inconsistent responses. Additionally, participants who reported that they spend 51% to 75% of their time devoted to latent print casework accounted for only six (6) of the thirty-nine (39) inconsistent responses. Finally, participants who reported that they spend 76% to 100% of their time devoted to latent print casework accounted for only two (2) of the thirty-nine (39) inconsistent responses.

Authorized by: Ron Smith, President
Ron Smith and Associates, Inc.

Date of Issue: May 10, 2018